

Buy Well, Sell Well with Tugwell



www.TugwellAuctionRealty.com

PRESORTED  
FIRST-CLASS  
U.S. POSTAGE PAID  
ROCKY MOUNT, NC  
PERMIT NO. 39

P.O. Box 252 • Falkland, NC 27827

NCAL #9485 – NCRB #23998  
RETURN SERVICE REQUESTED

# Real Estate Auction

52+/- Acres – Staton Place LLC • Main St. Bethel, NC – Pitt County

Saturday, February 24, 2024 – 10:00 AM

[www.TugwellAuctionRealty.com](http://www.TugwellAuctionRealty.com)

REAL ESTATE TERMS: 10% Non-refundable deposit day of sale with balance in 30 days. Inspections should be done prior to sale. All property sells "as is". Confirmation day of sale with no waiting periods. Taxes will be prorated as of closing date. The owners are responsible for the cost of preparing the deeds and revenue stamps. Any other closing costs such as title searches and surveys will be the responsibility of the buyers. Tugwell Auction & Realty Co. is agent for the owners and does not have dual agency responsibilities. Announcements day of sale take precedence over any printed matter. Information obtained was furnished by sources deemed reliable; however, neither the owners nor the auction company guarantees this information to be correct. We encourage buyers to inspect the properties prior to sale and bid accordingly.

\*\*\* NO BUYERS' Premium is charged. \*\*\*

For more information Call TUGWELL AUCTION & REALTY COMPANY  
at 252-531-1500, 252-902-6895 or 252-531-5312

## AUCTIONEERS:

John Tugwell

Sharyn Tugwell

Joby Tugwell

Phil Page

LF Worthington

Michael Landen

Jody Proctor

Clerk: Mike Wooten

Office Staff: Bonnie Allen

Office Staff: Rachel Whitehurst

## Upcoming Auctions

Saturday, March 2, 2024 – 9 AM

42nd Annual Belvoir Fire Department Auction • Greenville, NC – Pitt County

Saturday, March 16, 2024

4700 +/- SF Large Commercial Building on 3.13+/- Acres • 2200 SF Home with 3 Bedrooms on  
2.32+/- Acres • Equipment & Tools • Hwy 11 - Grifton, NC - Pitt County

**52+/- Acres – Staton Place LLC • Main St. Bethel, NC – Pitt County**

**Saturday, February 24, 2024 – 10:00 AM**

**Bethel Township, Pitt County Parcel Numbers 21095, 21093, 74345**

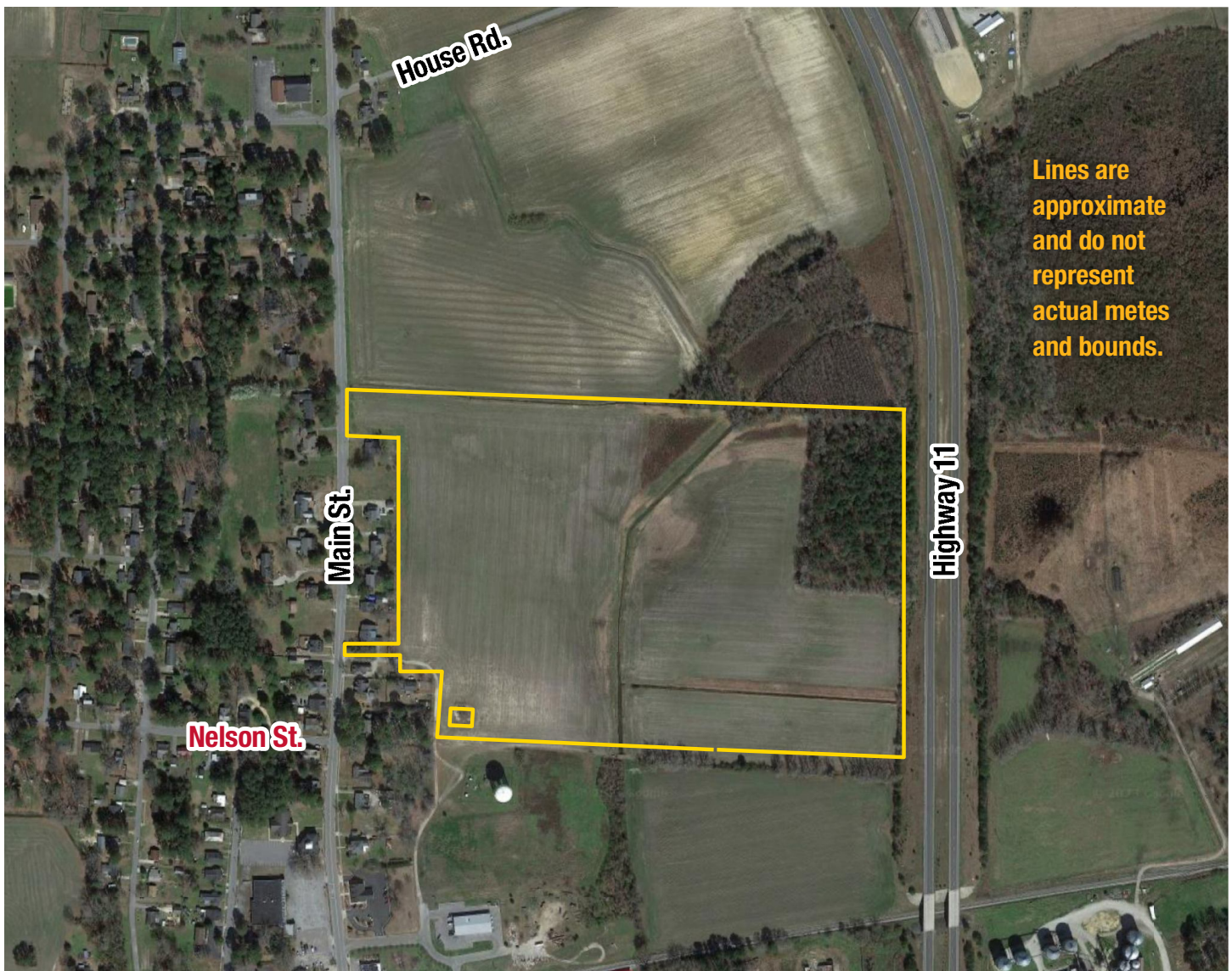
**Pitt County Deed Book 2378, Page 396-399**

**FSA Farm Serial # 8498, Tract # 10270**

**52+/- Acres - 44+/- Cleared - 8+/- Woodland  
200+ Feet of Road Frontage on North Main St.  
Property borders NC Hwy 11 Right of Way**

**All property is in the Bethel City Limits.**

**Subdivision Plan for 174 single family residential lots has been completed  
by Rivers and Associates Incorporated  
107 East Second St. • Greenville, NC • Phone # 252-752-4135**



**T .. A .. D ..**